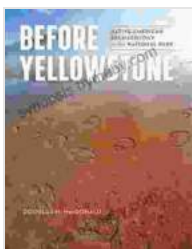
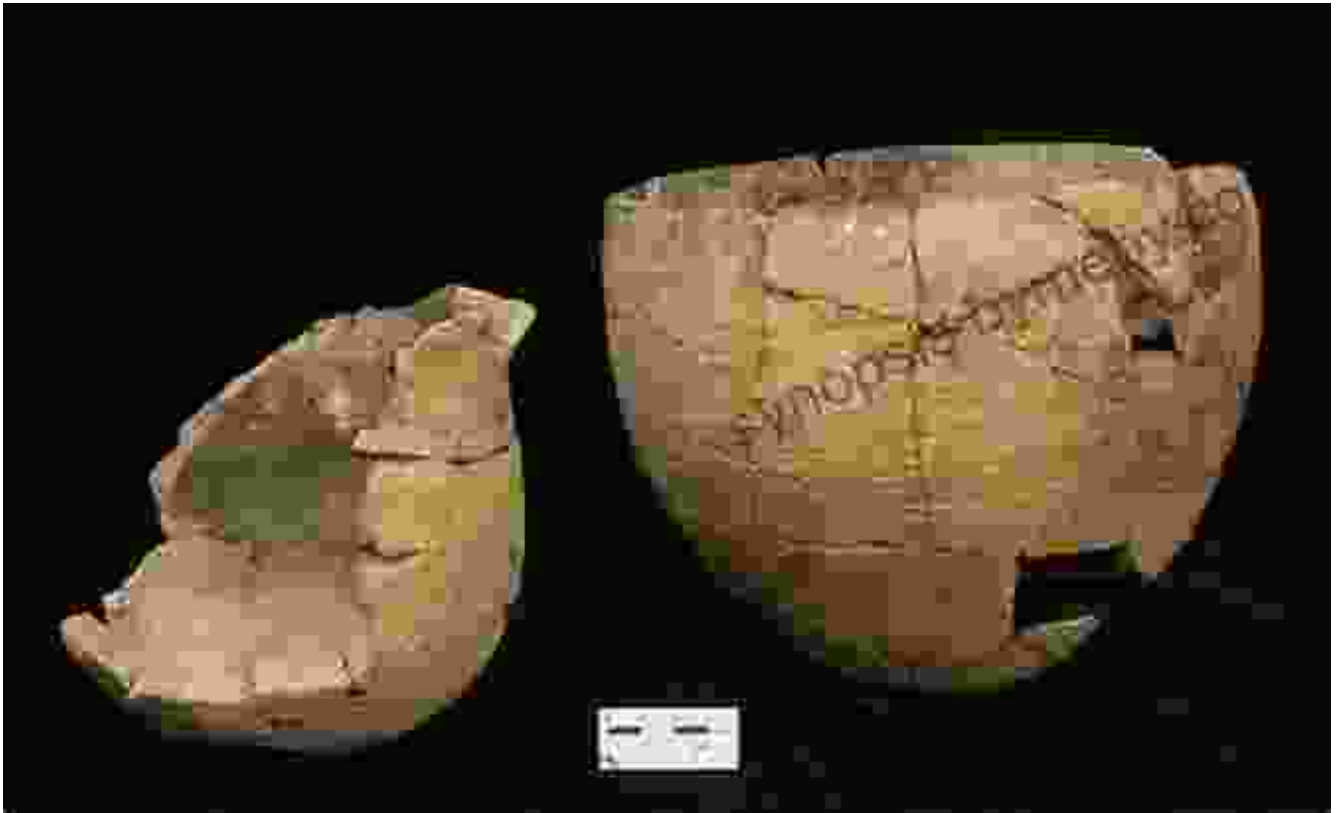


Native American Archaeology in the National Park Service

A Journey Through Time and Culture



Before Yellowstone: Native American Archaeology in the National Park (Samuel and Althea Stroum Books xx)

by Douglas H. MacDonald

★★★★☆ 4.7 out of 5

Language : English
File size : 62090 KB
Text-to-Speech : Enabled
Screen Reader : Supported
Enhanced typesetting : Enabled
Word Wise : Enabled
Print length : 240 pages

FREE

DOWNLOAD E-BOOK



The National Park Service (NPS) is the guardian of some of the most significant and captivating Native American archaeological sites in the United States. From the ancient ruins of Chaco Canyon to the sacred landscapes of Mesa Verde, these sites hold the keys to understanding the rich cultural heritage of Native American peoples.

Native American archaeology, a specialized branch of anthropology, explores the material remains of past Native American societies. Through careful excavation, analysis, and interpretation, archaeologists uncover clues to the lives, beliefs, and practices of these ancient cultures.

Unveiling Ancient Mysteries



NPS archaeologists work tirelessly to protect and preserve these invaluable sites, ensuring that they remain intact for generations to come. They conduct meticulous excavations, meticulously documenting every artifact, feature, and layer of earth.

Their tireless efforts have yielded extraordinary insights into Native American life. Archaeologists have discovered sophisticated irrigation systems, intricate pottery designs, elaborate ceremonial structures, and evidence of complex social and political organizations.

Preserving a Cultural Legacy



Beyond excavation, NPS archaeologists play a vital role in preserving the cultural legacy of Native American communities. They collaborate with tribal elders and knowledge keepers to ensure that the interpretation of archaeological sites is culturally sensitive and respectful.

Through educational programs, guided tours, and exhibits, the NPS shares the stories of these ancient cultures with the public, fostering a deeper understanding of the rich tapestry of American history.

Protecting Sacred Landscapes



Many Native American archaeological sites are considered sacred by indigenous communities. The NPS recognizes this spiritual significance

and works closely with tribes to protect these landscapes from development or other forms of disturbance.

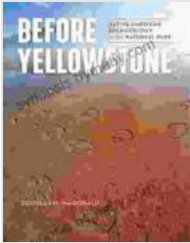
By safeguarding these sacred places, the NPS ensures the continuation of traditional practices, cultural ceremonies, and spiritual connections that have been passed down through generations.

A Call to Explore



The National Park Service invites you to embark on a journey of discovery into the fascinating world of Native American archaeology. Visit one of the many archaeological sites within the NPS system and immerse yourself in the rich cultural heritage of our nation's first peoples.

Through the insights of archaeology, we can better understand our shared history, appreciate the diversity of human experience, and safeguard the legacy of our ancestors.

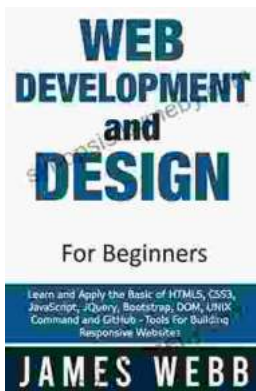


Before Yellowstone: Native American Archaeology in the National Park (Samuel and Althea Stroum Books xx)

by Douglas H. MacDonald

★★★★☆ 4.7 out of 5

Language : English
File size : 62090 KB
Text-to-Speech : Enabled
Screen Reader : Supported
Enhanced typesetting : Enabled
Word Wise : Enabled
Print length : 240 pages



Web Development and Design for Beginners: Unleash Your Inner Web Master!

: Dive into the Exciting World of Web Development Welcome to the captivating world of web development, where you'll embark on an...



Emperor of the Sea Charlotte Linlin:

A Monumental Force in the One Piece Universe Origins and Early Life Charlotte Linlin, colloquially known as Big Mom,...

